



UNIVERSITY OF SOUTHERN MISSISSIPPI INNOVATION AND COMMERCIALIZATION PARK

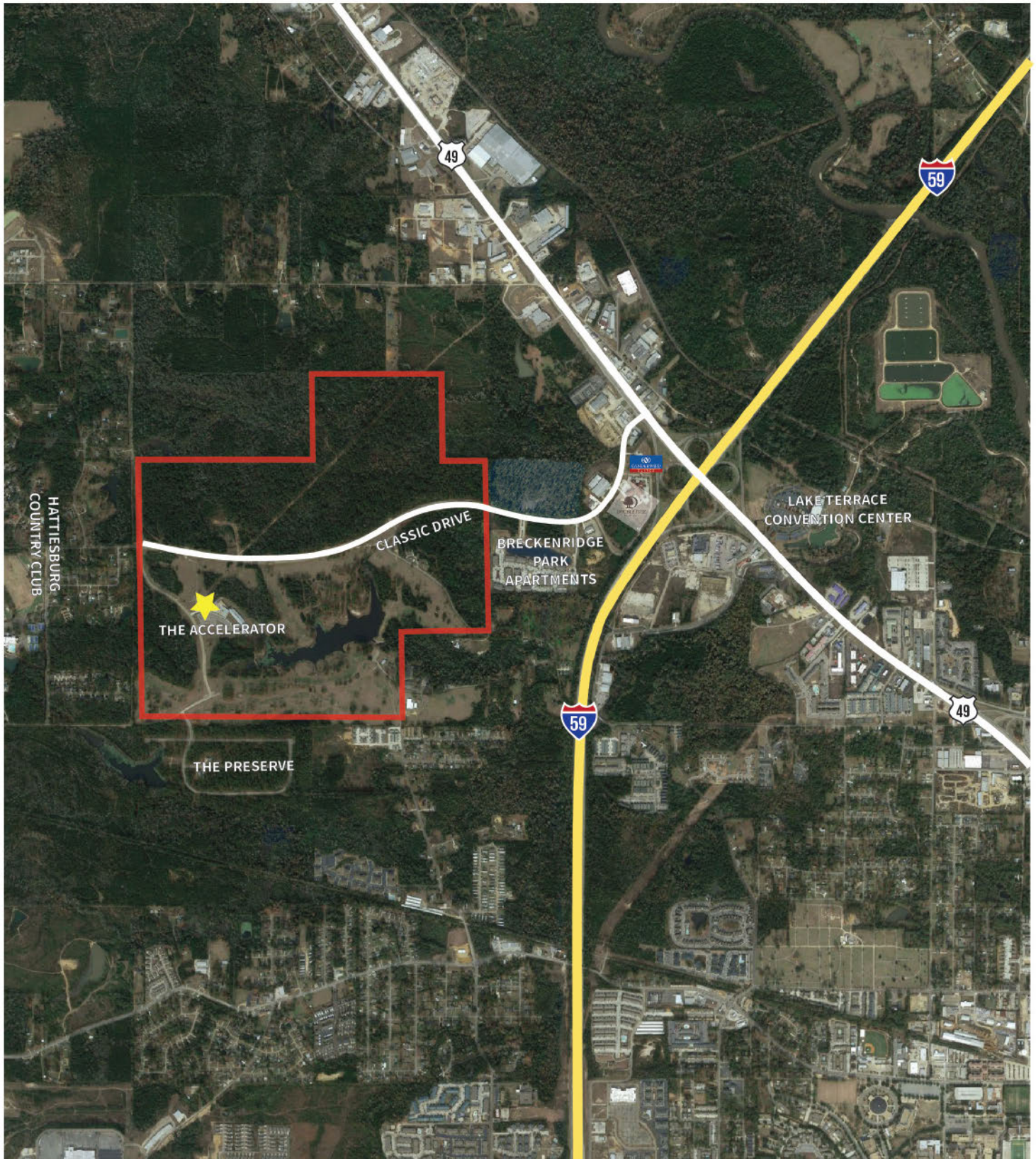
Classic Drive
Hattiesburg, MS 39402



UNIVERSITY OF SOUTHERN MISSISSIPPI

INNOVATION AND COMMERCIALIZATION PARK (ICP)

REGIONAL MAP



UNIVERSITY OF SOUTHERN MISSISSIPPI

INNOVATION AND COMMERCIALIZATION PARK (ICP)

SITE MAP



INNOVATION AND COMMERCIALIZATION PARK SITE ADVANTAGES

- Upscale technology park
- Underground infrastructure
- <1 mile from Interstate interchange
- All due diligence completed
- Site is free of any encumbrances
- Close proximity to quality of life amenities
- Located in designated New Market Tax Credit and Opportunity Zone

MISSISSIPPI POLYMER INSTITUTE

Mississippi Polymer Institute (MPI), is a nonprofit industrial outreach organization brought into existence by the School of Polymers and High Performance Materials at The University of Southern Mississippi. MPI has played a key role in growing the state's multi-billion-dollar-per-year, high-tech polymer industry, and has directly assisted in the creation of thousands of jobs. While the primary focus is supporting growth of advanced-material businesses within Mississippi, MPI performs contracted work for companies worldwide.



MPI provides assistance to the entire advanced material ecosystem; student outreach, product conceptualization-through-commercializations, manufacturing troubleshooting assistance and customized workforce training.

SERVICES

- Product development
- Complaint investigations
- Prototyping
- Process development
- Testing services
- Commercial production
- Troubleshooting
- Tailored workforce training
- Educational outreach

SPECIALTIES

- Polymer synthesis
- Resin compounding, extruding and molding
- Composite manufacturing techniques
- Design and CAD modeling
- Laser scanning and 3D printing
- ISO 17025 accredited testing/analysis



GE Aviation

GE Aviation is a world-leading provider of commercial, military, business and general aviation jet engines as well as avionics, electrical power and mechanical systems for aircraft. GE Aviation partnered with MPI to train the local workforce for a new 340,000 sq. ft. facility here in the region. MPI's Workforce Development and Technical Team, led the effort to create three composite training courses (Introduction to Composites, Composites Structures, and Lean Composites) for GE Aviation's pre-employment and post-hiring needs. The Introduction to Composites course is part of JCJC's Advanced Manufacturing Skills Certification, which includes training in business, lean manufacturing, safety, basic math, blue print reading, and team training. The Introduction to Composites course was designed specifically for GE Aviation and their specific manufacturing process. The program and collaboration were so successful that GE Aviation and MPI have partnered to develop a subsequent composite course in resin transfer molding.



Reactive Surfaces, RSL, a company at the Accelerator creates non-toxic and eco-friendly paints and coatings that give functionality to surfaces. RSL develops enzyme-based and peptide-based additives for a multitude of functional coating applications. RSL had an opportunity to market their eRACE screen protectors on "As Seen on TV" and needed rapid assistance with their scale-up process. MPI quickly assisted RSL in building thousands of screens so they were ready for nationwide distribution and well-positioned to transition to large-scale toll manufacturers. Steven McDaniel, CEO of Reactive Surfaces said "We already had a great deal of confidence in the MPI staff from their excellent GLP studies of our ProteCoat biocides, and their work significantly contributed to our present success before the United States EPA....we were not disappointed."

THE ACCELERATOR

The mission of USM's Accelerator is to drive economic development through technology innovation and commercialization. The Accelerator serves business as an innovation center for accelerated technology development, scale-up, market validation, manufacturing and commercialization—all under the same roof. By fostering entrepreneurship and job creation through the acceleration of new business formation, growth and viability, the Accelerator at Southern Miss is truly a one of a kind technology centered business incubator.

The Accelerator is currently home to 11 companies ranging from small locally based start-ups to large multi-national corporations.

Cultivating ideas from mind to molecules to market and specialized for innovation in composites, polymers, formulation science, biotechnology, sustainable chemistry, alternative energy and more.



The Accelerator is a premier facility designed to support all stages of business growth with the following key entities:

- Parcels for advanced material manufacturers to purchase or lease long-term
- The Mississippi Polymer Institute (MPI); the industrial outreach arm of the School of Polymers and High Performance Materials
- A Technology Incubator that provides office space, laboratories, pilot-scale facilities, and support services to accelerate innovation and business growth.



60,000
TOTAL SQUARE FEET

4
MILES FROM THE UNIVERSITY OF
SOUTHERN MISSISSIPPI CAMPUS

10
LABORATORIES

12
PRIVATE OFFICES

30
WORK CUBICLES

15,000
SQUARE FEET TOTAL
SHARED RESOURCES