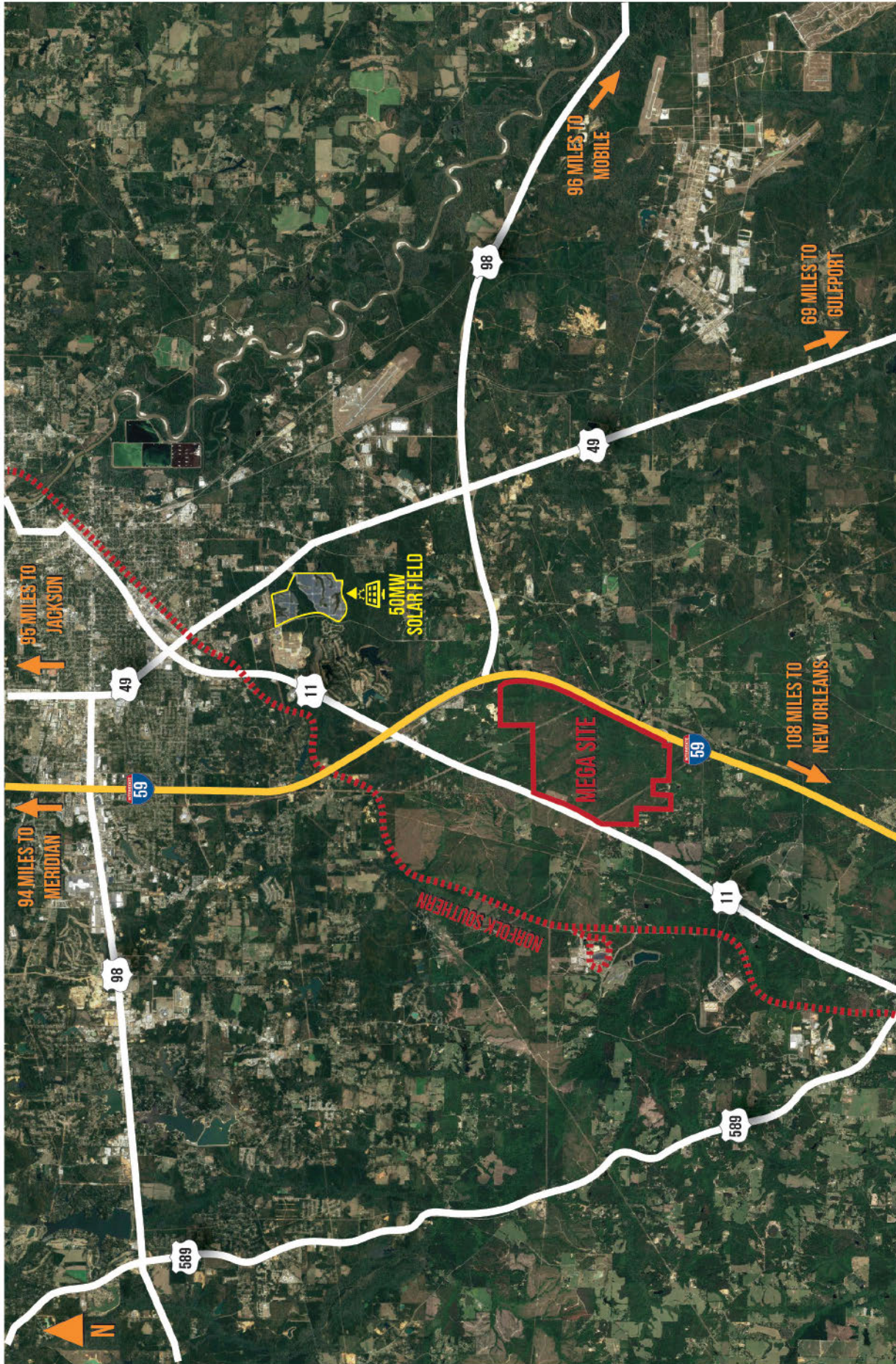




GREATER HATTIESBURG EAGLE ONE MEGA SITE

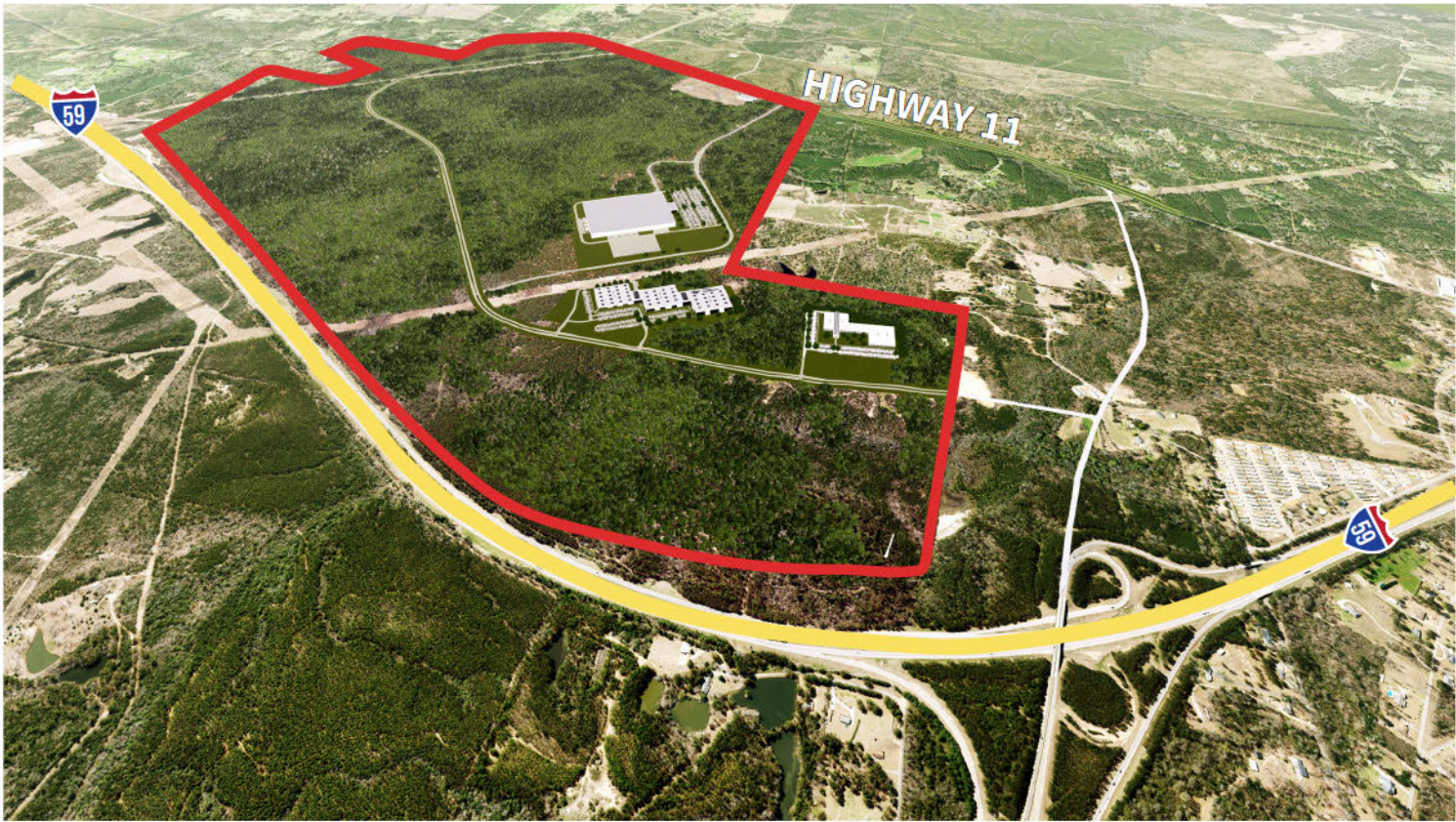
Hattiesburg, MS





EAGLE ONE MEGA SITE GREATER HATTIESBURG *Regional Map*

EAGLE ONE MEGA SITE
AERIAL MAP
Scenario 3



EAGLE ONE MEGA SITE
AERIAL MAP
Scenario 1



FORREST-LAMAR EAGLE ONE MEGA SITE

SITE SPEC SHEET

LOGISTICS INFORMATION

Often referred to as the “Hub City”, due to its strategic location, Greater Hattiesburg has a vibrant culture, diverse economy, and a high quality of life that provides a world of opportunity. Centrally located between Jackson, MS, Gulfport/Biloxi, MS, New Orleans, LA and Mobile, AL, Greater Hattiesburg is positioned with direct interstate connections and highway routes, three Class I railroads, and access to 5 Gulf of Mexico Ports.

Driving Distance:

- Gulfport - 69 miles (111 KM)
- Jackson - 95 miles (152 KM)
- Mobile - 99 miles (159 KM)
- New Orleans - 108 miles (173 KM)

5 Gulf of Mexico ports located less than two hours away from the site:

- Port of Gulfport (deepwater) - 68 miles (109 KM)
- Port of Bienville - 95 miles (152 KM)
- Port of Pascagoula (deepwater) - 97 miles (156 KM)
- Port of Mobile (deepwater) - 99 miles (159 KM)
- Port of New Orleans (deepwater) - 109 miles (175 KM)

Rail service will be provided by Norfolk Southern (Class I railroad):

- The site is located just two miles from the Norfolk Southern mainline that travels from the Port of New Orleans to Norfolk, Virginia and continues to the upper Northeast. Rail service can be extended to the site from the mainline.

Located within two hours of 6 airports:

(Including 5 Commercial Airports)

- Hattiesburg-Bobby L. Chain Municipal Airport (Available for corporate travel) - HBG (8 MI / 13KM)
- Hattiesburg-Laurel Regional Airport - PIB (18 MI / 29 KM)
- Gulfport-Biloxi International Airport - GPT (65 MI / 105 KM)
- Mobile Regional Airport - MOB (88 MI / 142 KM)
- Jackson-Evers International Airport - JAN (98 MI / 158 KM)
- Louis Armstrong New Orleans International Airport - MSY (116 MI / 187 KM)

FORREST-LAMAR EAGLE ONE MEGA SITE

SITE SPEC SHEET

Site Characteristics:

- Total Acreage of the Eagle One Mega Site - 2,222 acres
- Frontage on Interstate 59 - 2.8 miles (5 KM)
- Frontage on U.S Hwy 11 - 1.2 miles (2 KM)
- Latitude: 31.1332°
- Longitude: 89.2051°
- Altitude: 340'

Due Diligence:

All technical due diligence completed with no major limiting factors that will hinder or significantly impact development.

Studies Completed:

- Phase 1 Environmental Study
- Geo-technical Soil Borings
- Wetlands Delineation/ Jurisdictional Determination
- Phase I Cultural Resources Study
- Threatened and Endangered Species Study

Utilities Information

Electric

- Service distributed and provided by Pearl River Valley Electrical Association with Cooperative Energy as the generation entity
- 161 kV line adjacent to the site to accommodate a wide array of electrical demands

Gas:

- 16" Gulf South natural gas pipeline on site
- Service provided by Spire Energy

Water/Sewer:

- Water service designed to exceed project demand and provided by local water association
- Sewer service provided by the City of Hattiesburg with ample treatment capacity